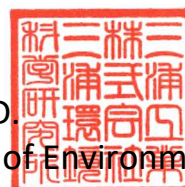


Certificate

of column set for GO system

MIURA CO., LTD.
Miura Institute of Environmental Science



This material is intended to be used for the determination of selected polychlorinated dibenzo-*p*-dioxins (PCDDs), polychlorinated dibenzofurans (PCDFs), and polychlorinated biphenyl (PCB) congeners, in food/feed, environmental matrices, and similar matrices.

Material	18Φ Column set GO-209PCB
Product Code	P10000270467
Lot No.	243713
Expiration Date	Sep/2027

Tests	Result	Criteria
Blank Values of PCDDs/PCDFs pg-TEQ/column set	< 0.34	< 2.5
Blank values of DL-PCBs pg-TEQ/column set	< 0.049	< 0.25
Blank values of NDL-PCBs pg-congener /column set	ND	Each isomer < 50
Blank values of other PCBs pg-congener /column set*	The highest isomer (#3) < 8.0	Each isomer < 50
Recovery PCDDs/PCDFs	89 to 116 %	60 to 120 %
Native Recovery Toxics/LOC/window difining PCB congeners	88 to 109 %	60 to 120 %

*: This congener was detected with the highest level among PCB congeners detected in this analysis.
Miura certifies that this product complies with all quality specifications. It was produced and inspected in accordance with the most current edition of the Miura Corporation Quality System Manual.
Contact: For any questions regarding your purchased product or the contents of this certificate, please contact your distributor.

DESCRIPTIONS

Lot Number: The number mentioned on the labels on the column bag is the lot production number.

Blank Level Values: Blank level values, expressed as mass fractions, for selected PCB congeners, selected PCDD, and PCDF congeners are provided in Table 2. Blank level values are a reference value for which MIURA has the highest confidence in its accuracy, in that all known or suspected sources of bias have been investigated or taken into account (JIS K0311 or JIS K0312).

Recovery Values (Sample): Recovery values, expressed as percentages, are provided in Table 3 for the selected mass labeled PCDD and PCDF congeners, based on the selected mass labeled recovery standards for PCDD and PCDF added before GC-MS measurement, when the blank test was implemented. The recovery values of PCBs, also expressed as percentages, are shown in Table 4 for the native toxics/LOC PCB congeners described in EPA method 1668C and the selected PCB congeners is required by EU regulations, based on a known amount of the native PCB standard solution. The recoveries meet the MIURA criteria for this certification.

NOTICE AND WARNING TO USERS

THE GO SYSTEM COLUMN SET IS INTENDED FOR DIOXIN ANALYTICAL USE ONLY, INCLUDING HAZARDOUS MATERIALS. BEFORE USE, READ THE SDS CAREFULLY; HANDLE PRODUCT AS A HAZARDOUS MATERIAL CAPABLE OF SKIN CORROSION AND/OR EYE DAMAGE.

INSTRUCTIONS FOR STABILITY, STORAGE, AND USE

Stability and Storage: The column set should be stored at room temperatures below 25 °C until use. It should not be frozen or exposed to sunlight or ultraviolet radiation. After removing from the bags, the contents should be used immediately, especially, because the concentration column (lower) can be deactivated under high-humidity. Storing of the removed column set is not recommended.

Use: If storing in a cold room or refrigerator, bring them to room temperature (let stand for approximately 30 min), remove water condensed on the surface of the bags. Carefully remove the bags to avoid damage of the column. Use the same lot number with one column set. For more information of column set refer to the operation manual.

ANALYTICAL METHODS USED AT MIURA

For blank test, several column sets chosen at random per lot production were allowed to reach ambient temperature; two types of the purification columns (upper: silver nitrate silica gel, and lower: sulfuric acid silica gel) were assembled, and 1 mL of n-hexane was added to wet the top of the column. Then, a known amount of internal standard solution (containing selected labeled PCB, PCDDs, and PCDFs congeners; as shown in Table 1) was added to the top of the column. 1 mL of n-hexane was added to the column two times again. Then, the purification columns assembled with the concentration columns (upper) and (lower) were set to the each system unit immediately. After two fractions (dioxin and PCB fractions) were obtained from each system unit, a known amount of the recovery standard solution was added to each concentration vessel. Finally, both fractions were concentrated to 0.02 mL.

Table 1. Standard solutions used for recovery tests.

Compounds	Standard	Maker Code	Maker	Diluted Concentration
PCDDs and PCDFs	Internal Standard	DF-LCS-B	Wellington Laboratories Inc.	10 ng/mL in decane
	Recovery (Surrogate) Standard	DF-IS-J		
DL-PCBs , NDL-PCBs	Internal Standard (Labeled toxics/LOC)	TPCB-LCS-A500		
	Recovery (Surrogate) Standard	TPCB-IS-A-STK		

The concentrated dioxin fraction was analyzed using gas chromatography / high resolution mass spectrometry (GC/HRMS) operated in electron impact (EI) mode. A 0.25 mm ID × 60 m fused silica capillary (BPX-DXN, TRAJAN) was used for dioxin measurement, after that it was analyzed using GC/HRMS operated in EI mode. A 0.25 mm ID × 60 m fused silica capillary (HT8-PCB, TRAJAN) was used for PCB measurement. All injections were 2 µL using a splitless inlet. The results, blank level values (PCDDs, PCDFs, DL-PCBs, and NDL-PCBs) and the recoveries of labeled compounds (PCDDs and PCDFs), are provided in Table 2 and Table 3, respectively. The chromatograms of each compounds are shown at page 7 and after. Furthermore, the mixed concentrated solution was analyzed using gas chromatography / low resolution mass spectrometry operated in total ion scan (m/z 50 to 500) mode, to confirm if interferences may affect determination of target compounds by GC/HRMS are included in the fractions, the chromatograms are not shown here.

For the recovery test, several column sets chosen at random per lot production were allowed to reach ambient temperature; the purification columns (upper) and (lower) were assembled. 1 mL of n-hexane was added to wet the top of the column. The native PCB standard solution (model, BP-MS by Wellington Laboratories Inc.) is diluted to 10ng/mL with decane. 0.02 mL of the diluted standard solution was added in the top of the column, subsequently 0.2 mL of toluene was applied. And then, 1 mL of n-hexane was added in the column two times again. The purification column was assembled with the concentration column (upper) and (lower), and set to the each system unit immediately. After obtaining two fractions from the system unit, the dioxin and PCB fractions were concentrated to approximately 0.01 mL. After the addition of a known amount of recovery standard solution, the both fractions were concentrated to 0.02 mL; then dioxin and PCB in each fractions were analyzed using GC/HRMS as mentioned above test. The recoveries of native toxics/LOC/window difining PCB congeners are displayed in Table 4.

Table 2. Blank levels of dioxins (PCDDs/PCDFs and DL-PCBs) and NDL-PCBs per column set.

Congener	Concentration pg/column	LOQ pg/column	LOD pg/column	S/N=3 pg/column	TEQ* pg/column
2,3,7,8-TeCDD	ND	0.26	0.08	0.08	0.08
1,2,3,7,8-PeCDD	ND	0.25	0.07	0.07	0.07
1,2,3,4,7,8-HxCDD	ND	0.4	0.1	0.09	0.01
1,2,3,6,7,8-HxCDD	ND	0.8	0.2	0.1	0.02
1,2,3,7,8,9-HxCDD	ND	0.4	0.1	0.1	0.01
1,2,3,4,6,7,8-HpCDD	ND	0.7	0.2	0.2	0.002
OCDD	ND	1.3	0.4	0.2	0.00012
2,3,7,8-TeCDF	ND	0.7	0.2	0.2	0.02
1,2,3,7,8-PeCDF	ND	0.9	0.3	0.1	0.009
2,3,4,7,8-PeCDF	ND	0.3	0.1	0.1	0.03
1,2,3,4,7,8-HxCDF	ND	0.6	0.2	0.2	0.02
1,2,3,6,7,8-HxCDF	ND	0.7	0.2	0.2	0.02
1,2,3,7,8,9-HxCDF	ND	0.6	0.2	0.2	0.02
2,3,4,6,7,8-HxCDF	ND	0.6	0.2	0.2	0.02
1,2,3,4,6,7,8-HpCDF	ND	1.0	0.3	0.2	0.003
1,2,3,4,7,8,9-HpCDF	ND	0.7	0.2	0.2	0.002
OCDF	ND	1.7	0.5	0.4	0.00015
#81 (3,4,4',5-TeCB)	ND	0.9	0.3	0.04	0.00012
#77 (3,3',4,4'-TeCB)	ND	1.4	0.4	0.05	0.00004
#126 (3,3',4,4',5-PeCB)	ND	1.3	0.4	0.05	0.04
#169 (3,3',4,4',5,5'-HxCB)	ND	1.1	0.3	0.04	0.009
#123 (2',3,4,4',5-PeCB)	ND	0.9	0.3	0.03	0.000009
#118 (2,3',4,4',5-PeCB)	ND	1.4	0.4	0.03	0.000012
#105 (2,3,3',4,4'-PeCB)	ND	1.2	0.4	0.03	0.000012
#114 (2,3,4,4',5-PeCB)	ND	0.8	0.2	0.03	0.000006
#167 (2,3',4,4',5,5'-HxCB)	ND	1.6	0.5	0.03	0.000015
#156 (2,3,3',4,4',5-HxCB)	ND	1.0	0.3	0.03	0.000009
#157 (2,3,3',4,4',5'-HxCB)	ND	1.7	0.5	0.03	0.000015
#189 (2,3,3',4,4',5,5'-HpCB)	ND	1.1	0.3	0.03	0.000009
#28 (2,4,4'-TrCB)	(0.4)	1.5	0.4	0.03	-
#52 (2,2',5,5'-TeCB)	ND	1.5	0.4	0.05	-
#101 (2,2',4,5,5'-PeCB)	ND	0.9	0.3	0.04	-
#138 (2,2',3,4,4',5'-HxCB)	ND	1.1	0.3	0.04	-
#153 (2,2',4,4',5,5'-HxCB)	ND	0.8	0.3	0.04	-
#180 (2,2',3,4,4',5,5'-HpCB)	ND	1.6	0.5	0.04	-

* TEQ : Toxicity Equivalents (are applied WHO-TEF(2006))

1. The figures in the parentheses in the concentration of actual measurement denote the concentration of the LOD or more and less than the LOQ.
2. ND in the concentration of actual measurement denotes less than the LOD.
3. TEQ are calculated with an actual measurement which is the concentration of the LOQ or more, and an actual measurement which is the concentration of the LOD or more and less than the LOQ, respectively. For values less than the LOD, TEQ are calculated with the LOD.

Table 3. Recoveries of labeled internal standards.

Congener	Recovery
2,3,7,8-TeCDD	89 %
1,2,3,7,8-PeCDD	97 %
1,2,3,4,7,8-HxCDD	109 %
1,2,3,6,7,8-HxCDD	116 %
1,2,3,7,8,9-HxCDD	103 %
1,2,3,4,6,7,8-HpCDD	100 %
OCDD	107 %
2,3,7,8-TeCDF	97 %
1,2,3,7,8-PeCDF	102 %
2,3,4,7,8-PeCDF	106 %
1,2,3,4,7,8-HxCDF	108 %
1,2,3,6,7,8-HxCDF	109 %
1,2,3,7,8,9-HxCDF	116 %
2,3,4,6,7,8-HxCDF	106 %
1,2,3,4,6,7,8-HpCDF	101 %
1,2,3,4,7,8,9-HpCDF	104 %
OCDF	109 %

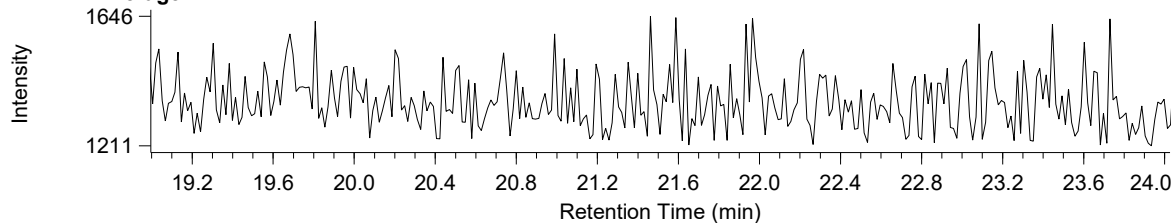
Table 4. Recoveries of native toxics/LOC/window difining PCB congeners.

Congener Name	No.	Recovery
2-MoCB	1	92%
4-MoCB	3	89%
2,2'-DiCB	4	100%
4,4'-DiCB	15	98%
2,2'6-TrCB	19	93%
2,4,4'-TrCB	28	100%
3,4,4'-TrCB	37	97%
2,2',5,5'-TeCB	52	98%
2,2'6,6'-TeCB	54	102%
3,3',4,4'-TeCB	77	93%
3,4,4',5-TeCB	81	95%
2,2',4,5,5'-PeCB	101	100%
2,2',4,6,6'-PeCB	104	98%
2,3,3',4,4'-PeCB	105	100%
2,3,4,4',5-PeCB	114	95%
2,3',4,4',5-PeCB	118	95%
2',3,4,4',5-PeCB	123	100%
3,3',4,4',5-PeCB	126	93%
2,2',3,4,4',5'-HxCB	138	97%
2,2',4,4',5,5'-HxCB	153	98%
2,2',4,4',6,6'-HxCB	155	105%
2,3,3',4,4',5-HxCB	156	95%
2,3,3',4,4',5'-HxCB	157	100%
2,3',4,4',5,5'-HxCB	167	88%
3,3',4,4',5,5'-HxCB	169	89%
2,2',3,4,4',5,5'-HpCB	180	100%
2,2',3,4',5,6,6'-HpCB	188	105%
2,3,3',4,4',5,5'-HpCB	189	103%
2,2',3,3',5,5',6,6'-OcCB	202	96%
2,3,3',4,4',5,5',6-OcCB	205	98%
2,2',3,3',4,4',5,5',6-NoCB	206	102%
2,2',3,3',4,5,5',6,6'-NoCB	208	97%
DeCB	209	109%

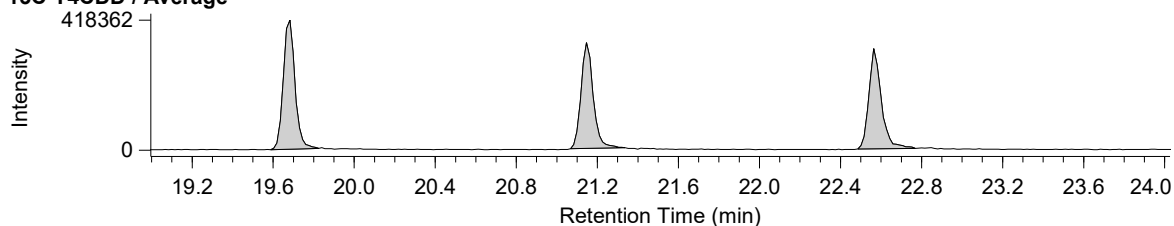
Compound View

DqData : M:\Diok\DqData\2025\C5E405\BPX-101-1
Injection : C5E405013X

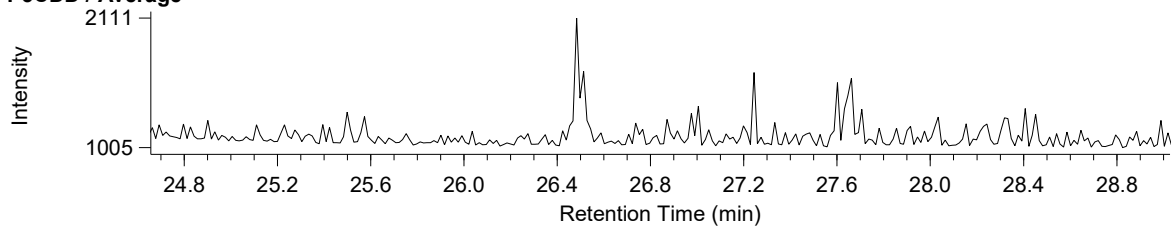
T4CDD / Average



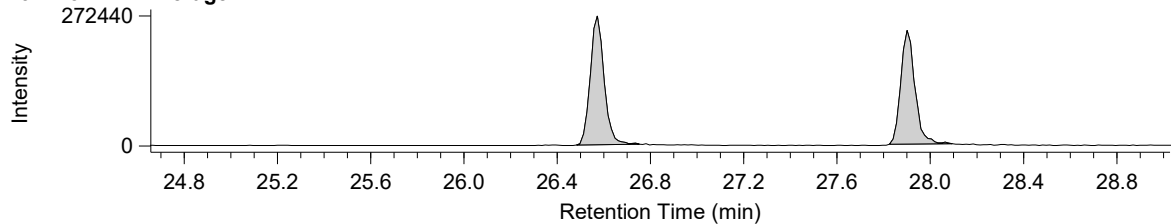
13C-T4CDD / Average



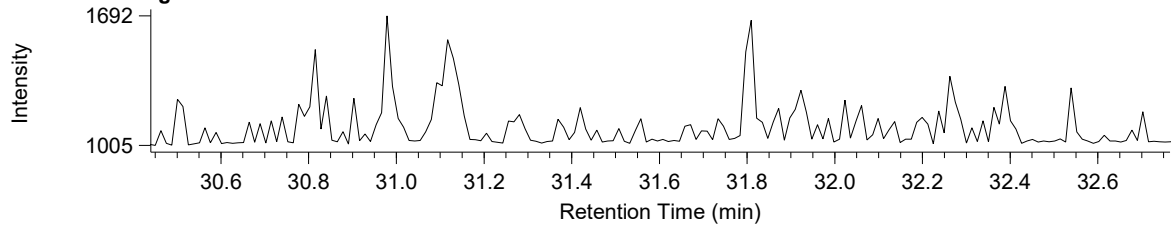
P5CDD / Average



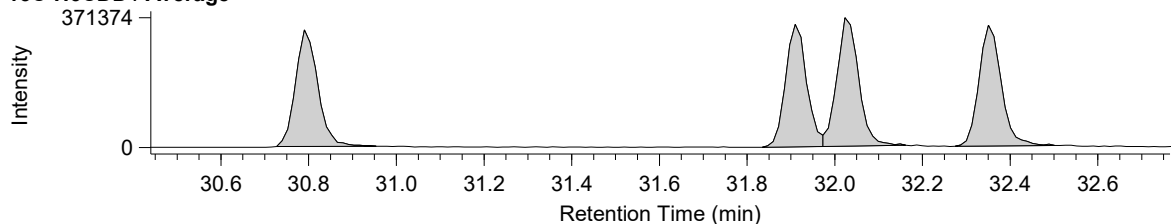
13C-P5CDD / Average



H6CDD / Average



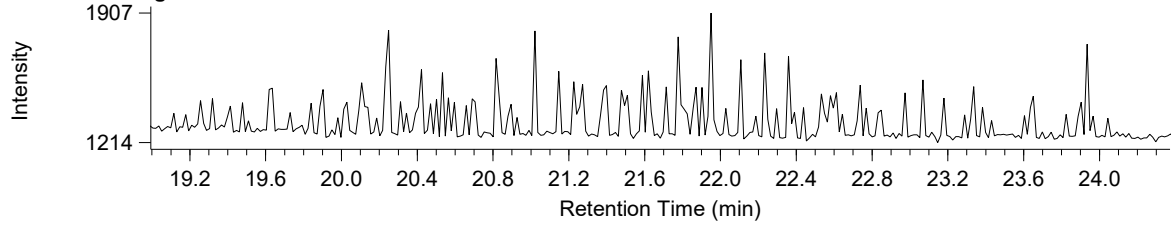
13C-H6CDD / Average



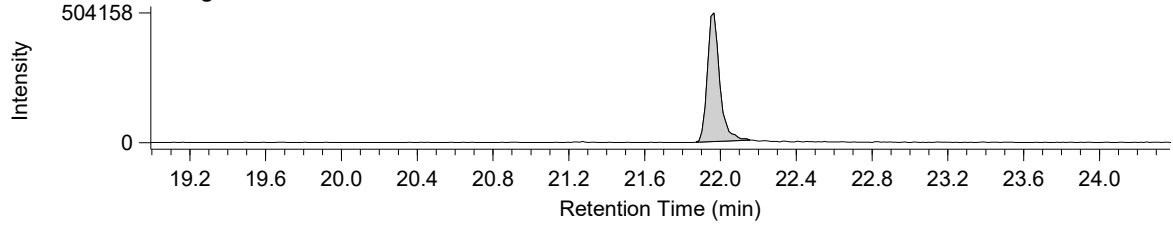
Compound View

DqData : M:\Diok\DqData\2025\C5E405\BPX-101-1
Injection : C5E405013X

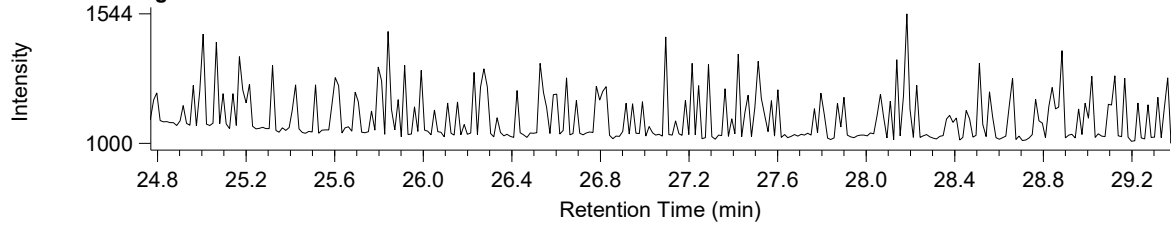
T4CDF / Average



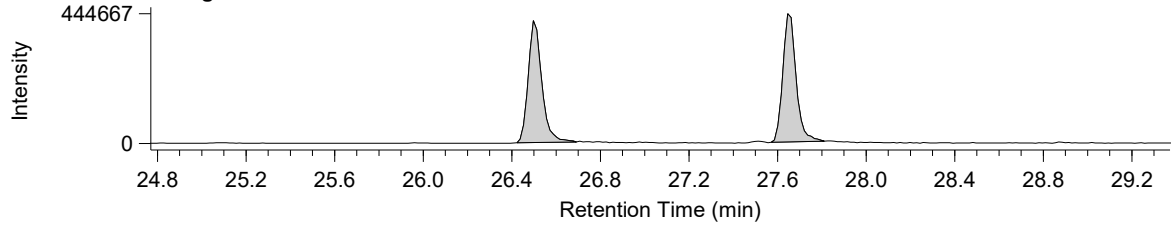
13C-T4CDF / Average



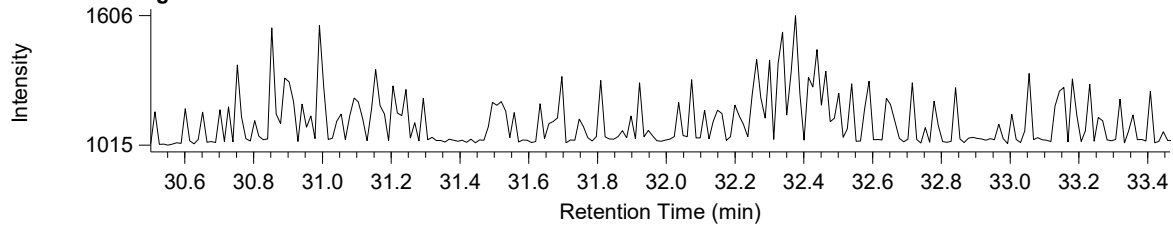
P5CDF / Average



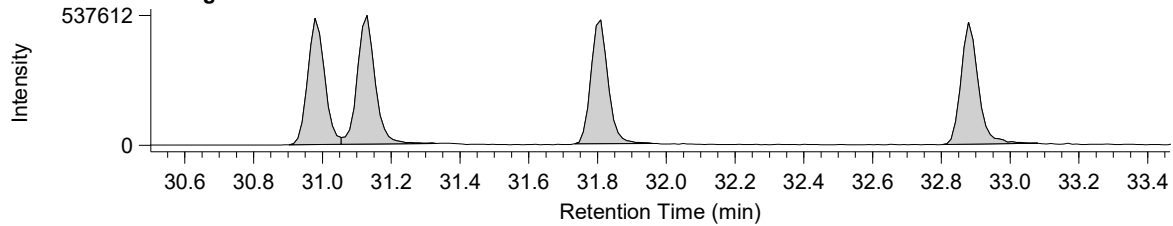
13C-P5CDF / Average



H6CDF / Average



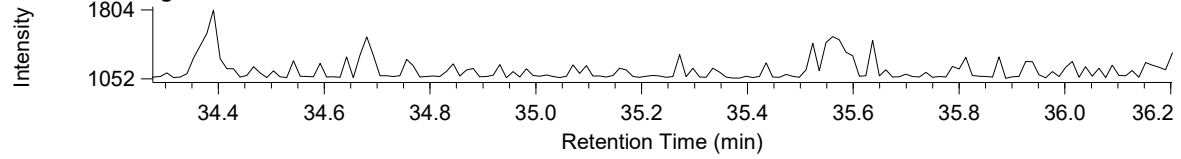
13C-H6CDF / Average



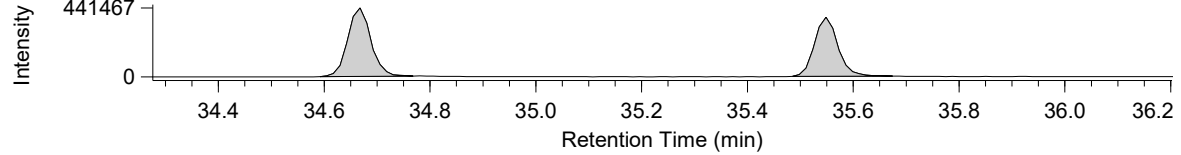
Compound View

DqData : M:\DioK\DqData\2025\C5E405\BPX-101-1
Injection : C5E405013X

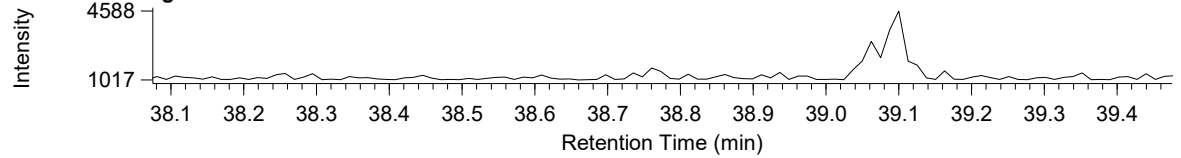
H7CDD / Average



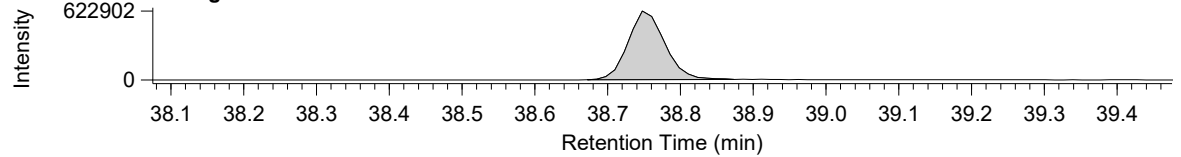
13C-H7CDD / Average



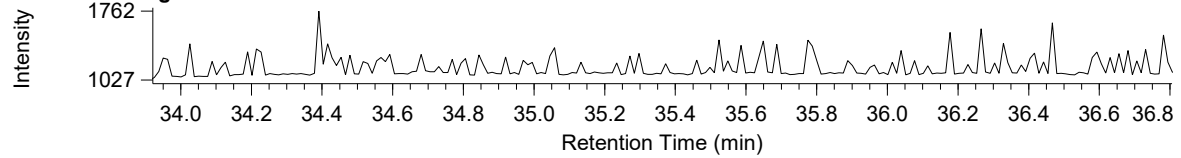
O8CDD / Average



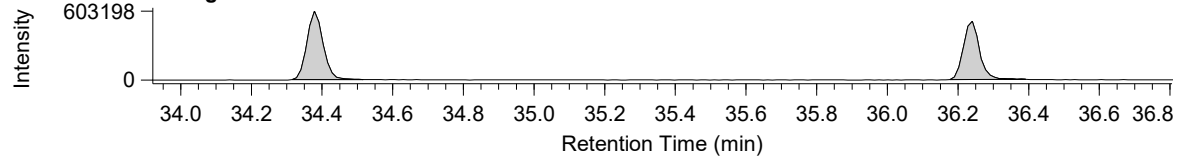
13C-O8CDD / Average



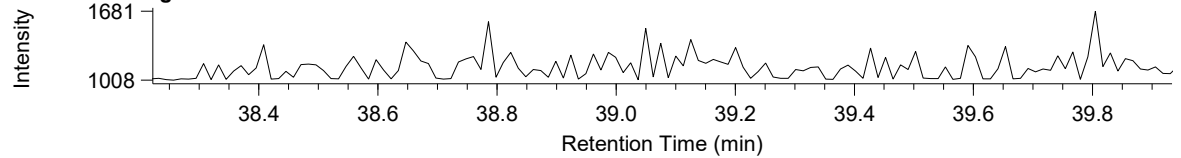
H7CDF / Average



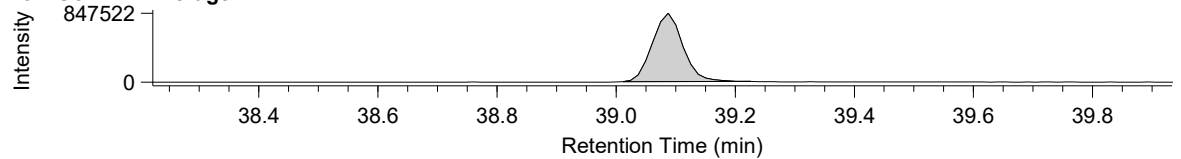
13C-H7CDF / Average



O8CDF / Average



13C-O8CDF / Average

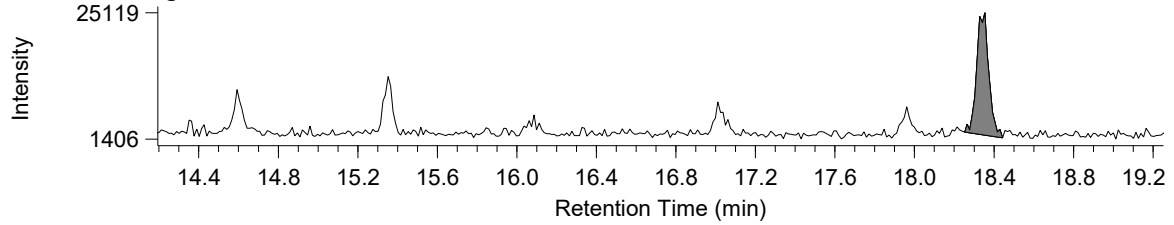


Compound View

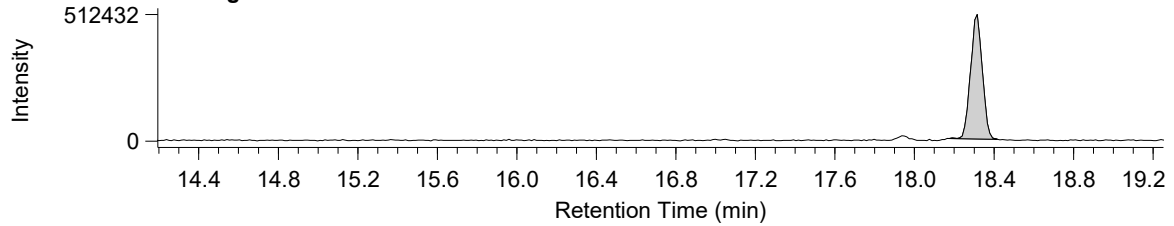
DqData : M:\Diok\DqData\2025\C5E405\HT8-PCB(1-10)-101-2

Injection : C5E405014X

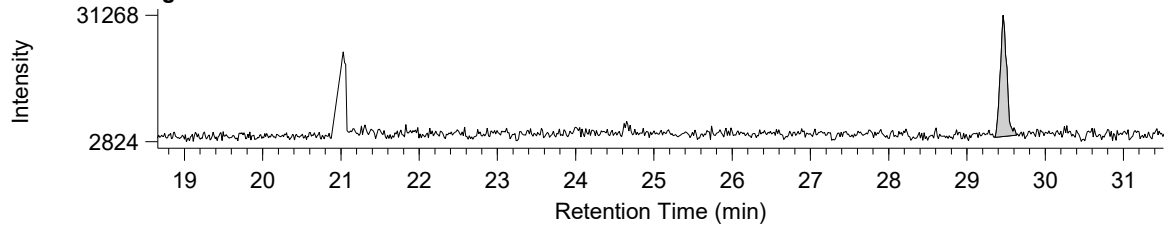
M1CBs / Average



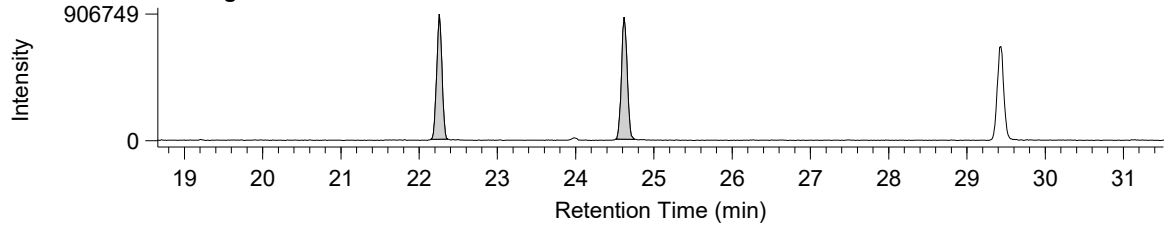
13C12-M1CB / Average



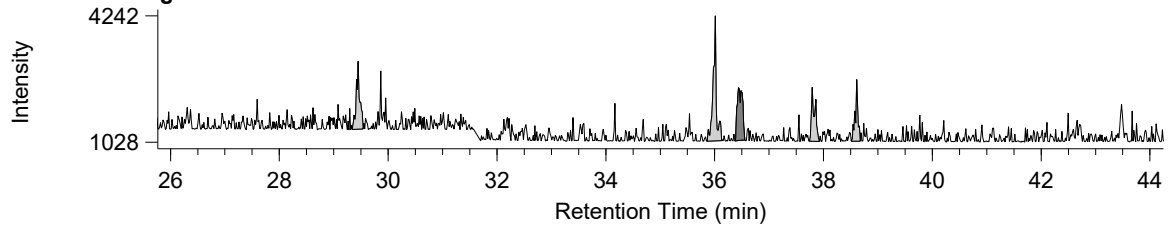
D2CBs / Average



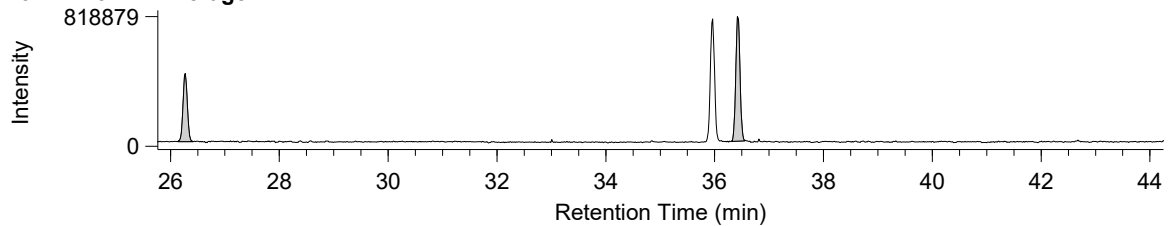
13C12-D2CB / Average



T3CBs / Average



13C12-T3CB / Average

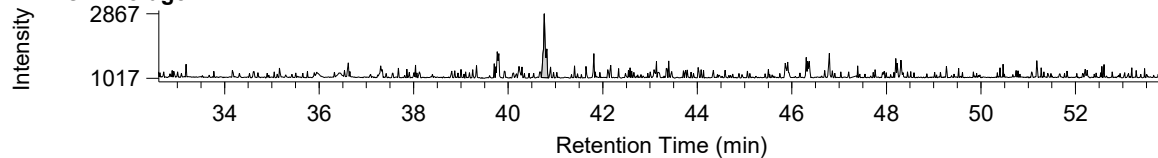


Compound View

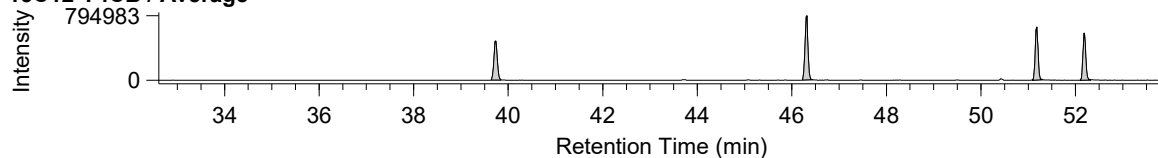
DqData : M:\Diok\DqData\2025\C5E405\HT8-PCB(1-10)-101-2

Injection : C5E405014X

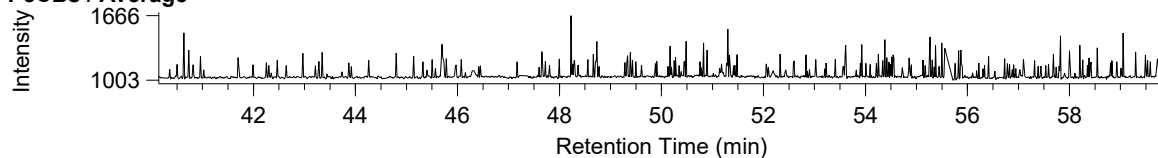
T4CBs / Average



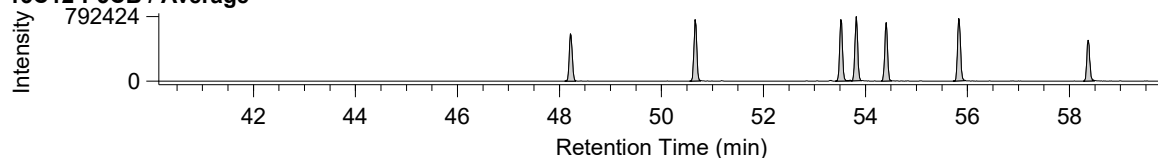
13C12-T4CB / Average



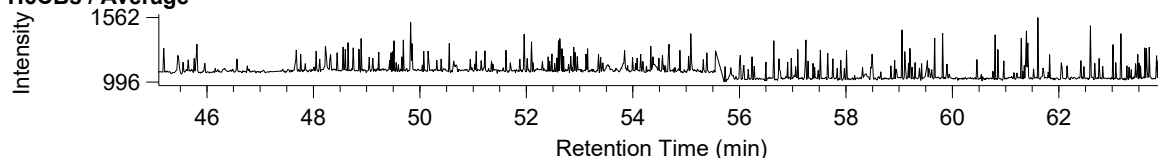
P5CBs / Average



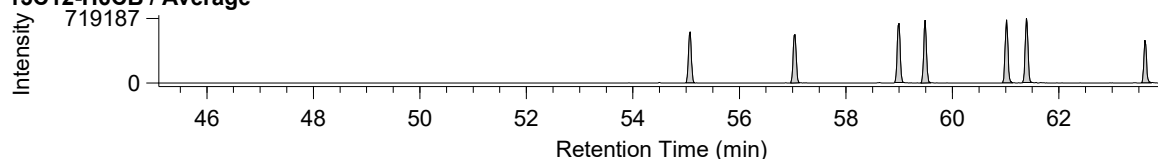
13C12-P5CB / Average



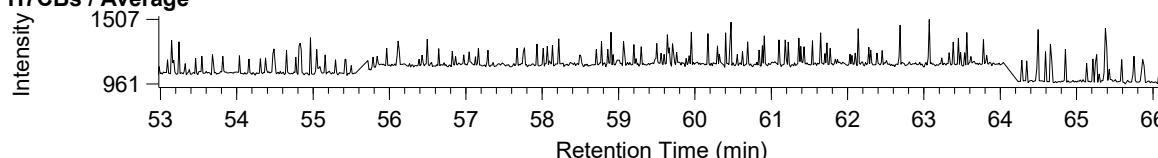
H6CBs / Average



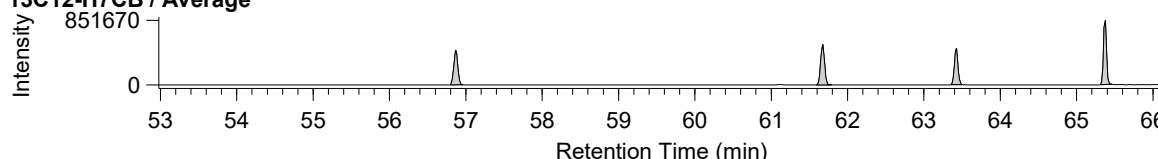
13C12-H6CB / Average



H7CBs / Average



13C12-H7CB / Average

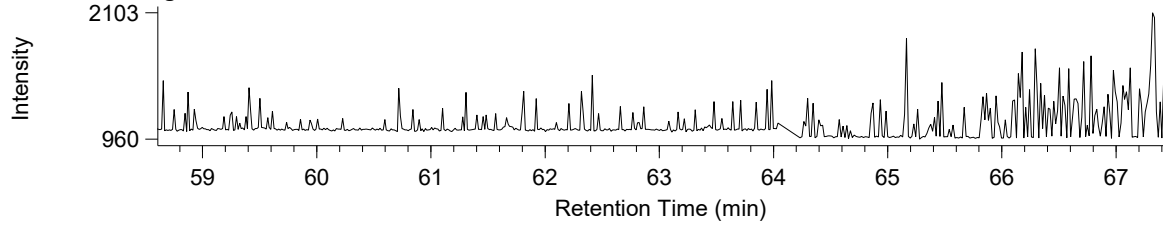


Compound View

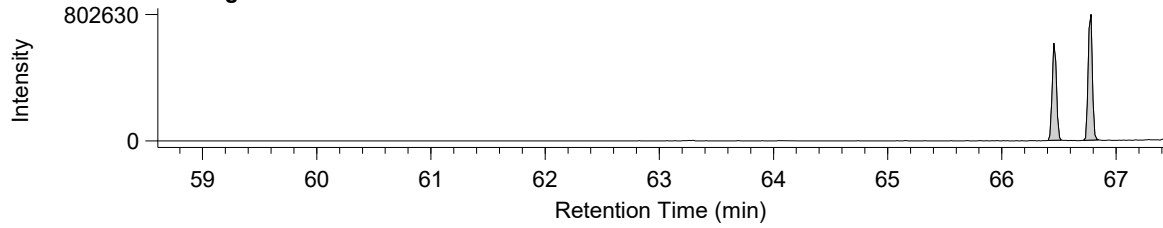
DqData : M:\Diok\DqData\2025\C5E405\HT8-PCB(1-10)-101-2

Injection : C5E405014X

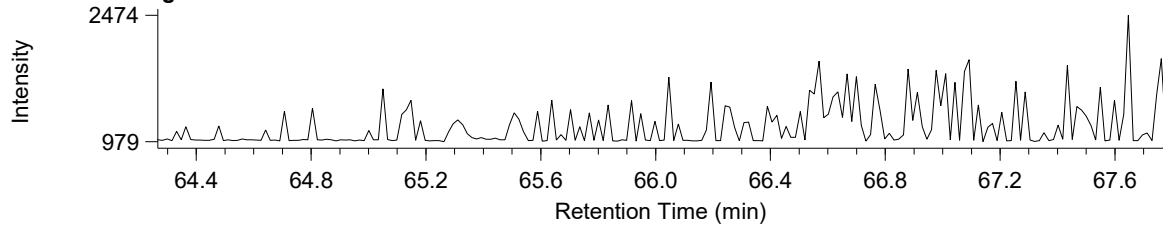
O8CBs / Average



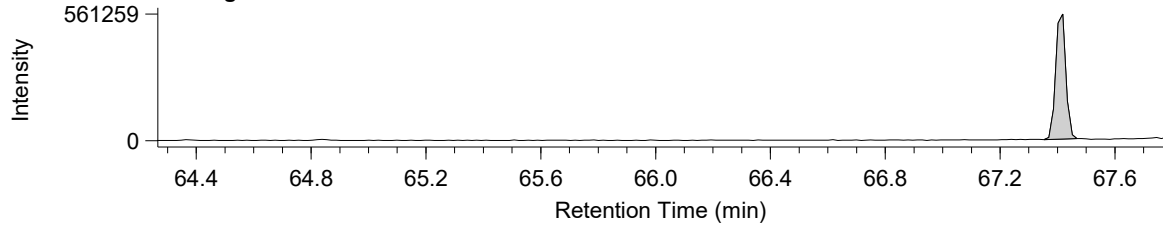
13C12-O8CB / Average



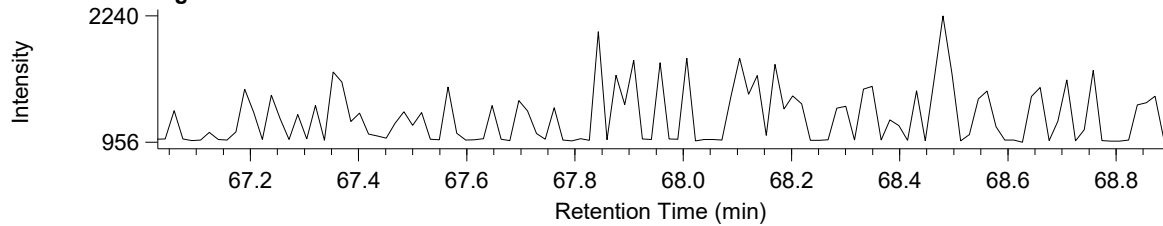
N9CBs / Average



13C12-N9CB / Average



D10CBs / Average



13C12-D10CB / Average

